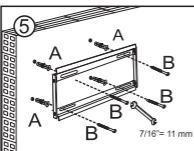
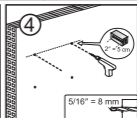
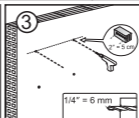
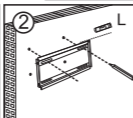
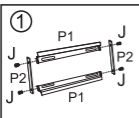
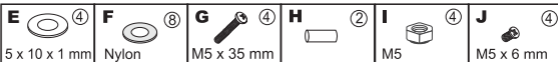
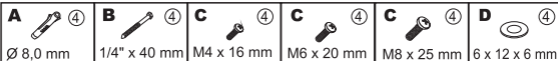
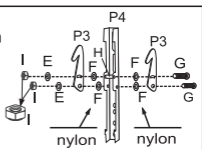


Manual de instruções/Instruction manual/Manual de instrucciones



⑥ **Atenção/Warning/Atención**
Rosquear até ultrapassar o anel de nylon
Thread until it passes the nylon ring
Rosquear hasta sobrepasar el anillo de nylon



PARA TV VESA 75 / 100 ATÉ 200 X 200 FOR VESA TV 75 / 100 UP TO 200 X 200 PARA TV VESA 75/100 HASTA 200 X 200

⑦

Utilize uma das 3 opções oferecidas (C), conforme a furação da sua TV.

Use of one the 3 available option (C), according to the holes on your TV set.

Utilice una de las 3 opciones ofrecidas (C), conforme la perforación de su TV.

