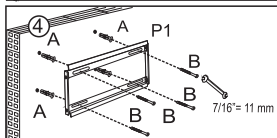
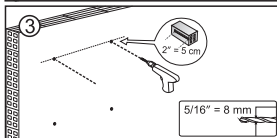
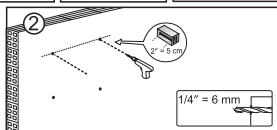
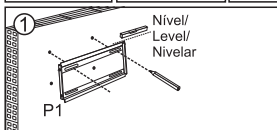
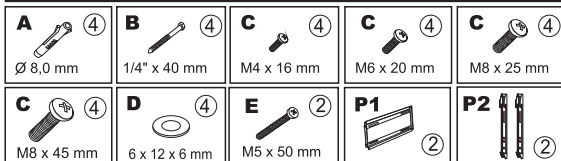


Manual de instruções/Instruction manual/Manual de instrucciones

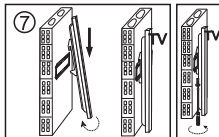
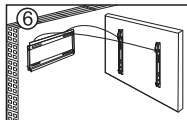
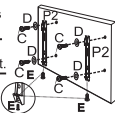


PARA TV VESA 75 / 100 ATÉ 200 X 200 FOR VESA TV 75 / 100 UP TO 200 X 200 PARA TV VESA 75/100 HASTA 200 X 200

- ⑤ Utilize uma das 4 opções oferecidas (C), conforme a furação da sua TV.

Use one of the 4 available options (C), according to the holes on your TV set.

Utilice una de las 4 opciones ofrecidas (C), conforme la perforación de su TV.



- ⑧ Apertar o parafuso letra (E) por debaixo da TV, utilizando chave philips com haste longa, conforme demonstrado no desenho.

Tighten the letter screw (E) under the TV, using philips wrench with long stem, as shown in the drawing.

Apretar el tornillo de la letra (E) debajo del televisor utilizando la llave philips con varilla larga, como se muestra en el dibujo.